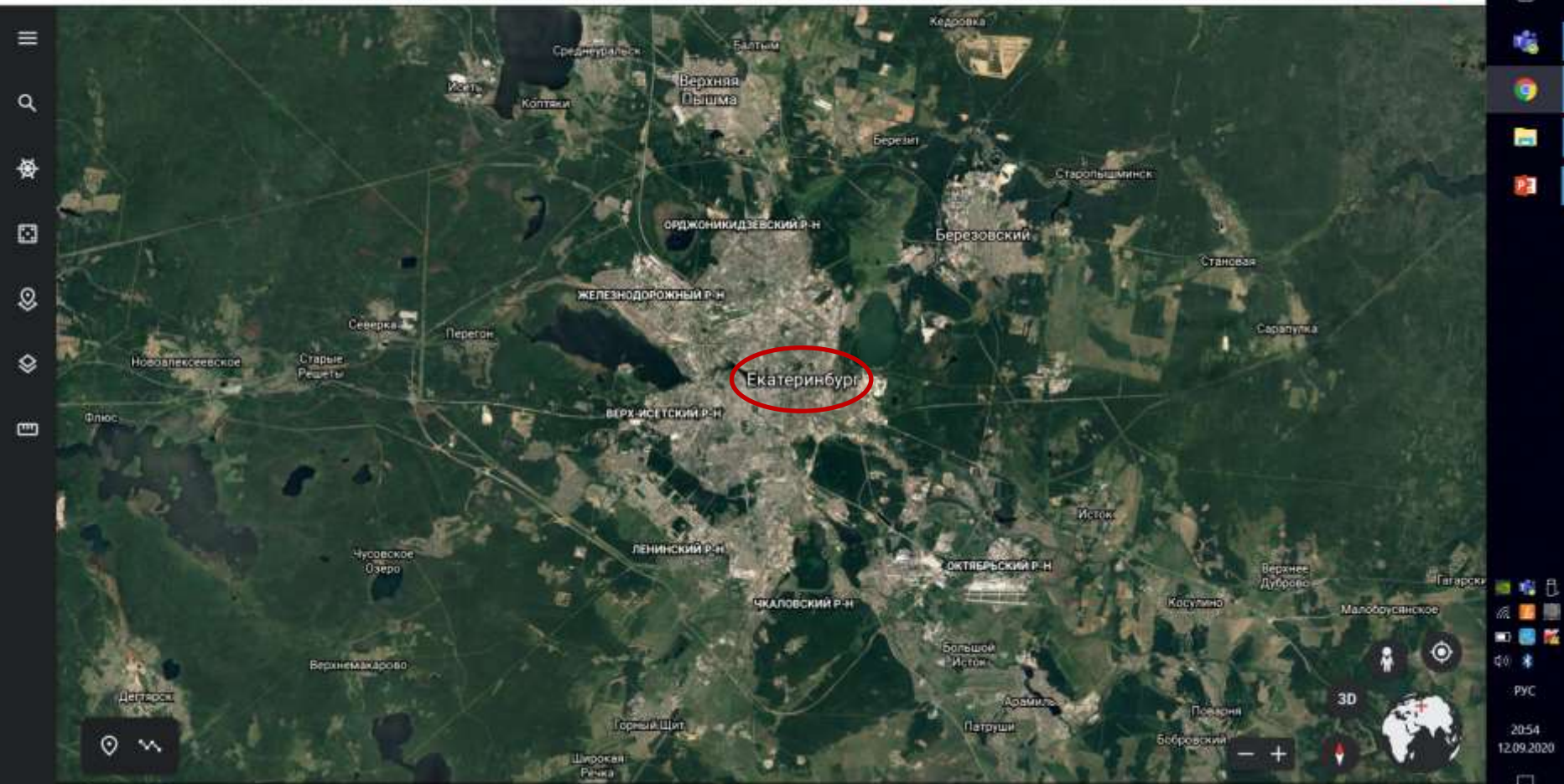


The background is a detailed, sepia-toned map of the Russian Empire, showing its vast territory and numerous cities. A prominent red line is drawn across the map, starting from the top left and curving towards the bottom right, representing a travel route. The text is overlaid on this map.

ПУТЕВЫЕ ЗАМЕТКИ

Екатеринбург



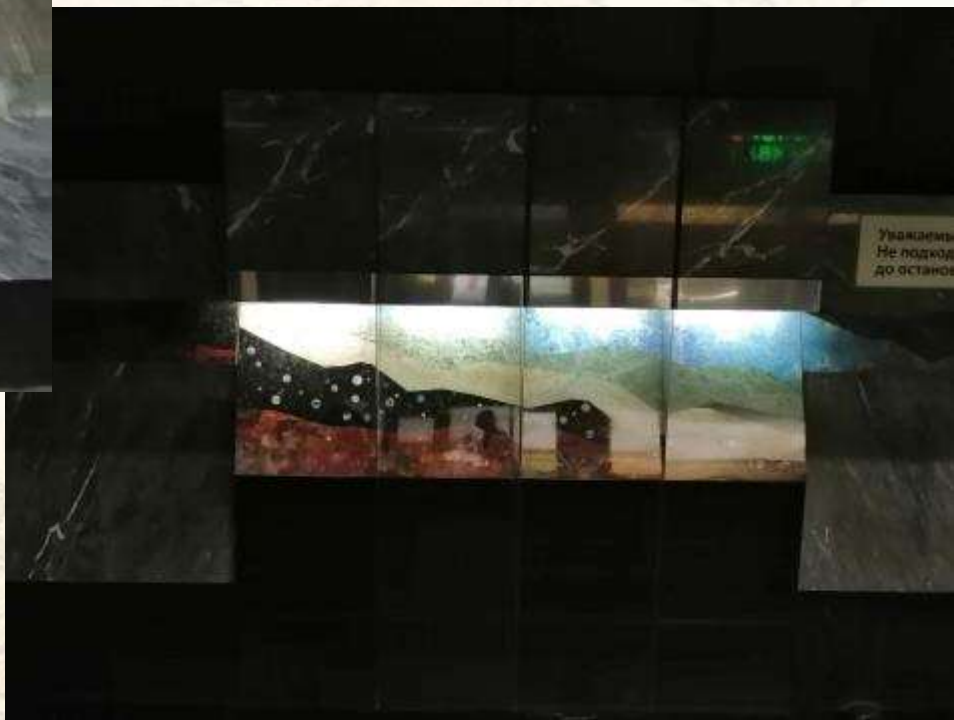
Windows taskbar showing icons for Mail, WhatsApp, Google Earth, and other applications. System tray includes network, volume, and power icons. Language is set to Russian (РУС). Date and time: 20:54, 12.09.2020.

















**МУЗЕЙ
ПЕРВОГО ПРЕЗИДЕНТА РОССИИ
Б. Н. ЕЛЬЦИНА**

BORIS YELTSIN PRESIDENTIAL MUSEUM





















